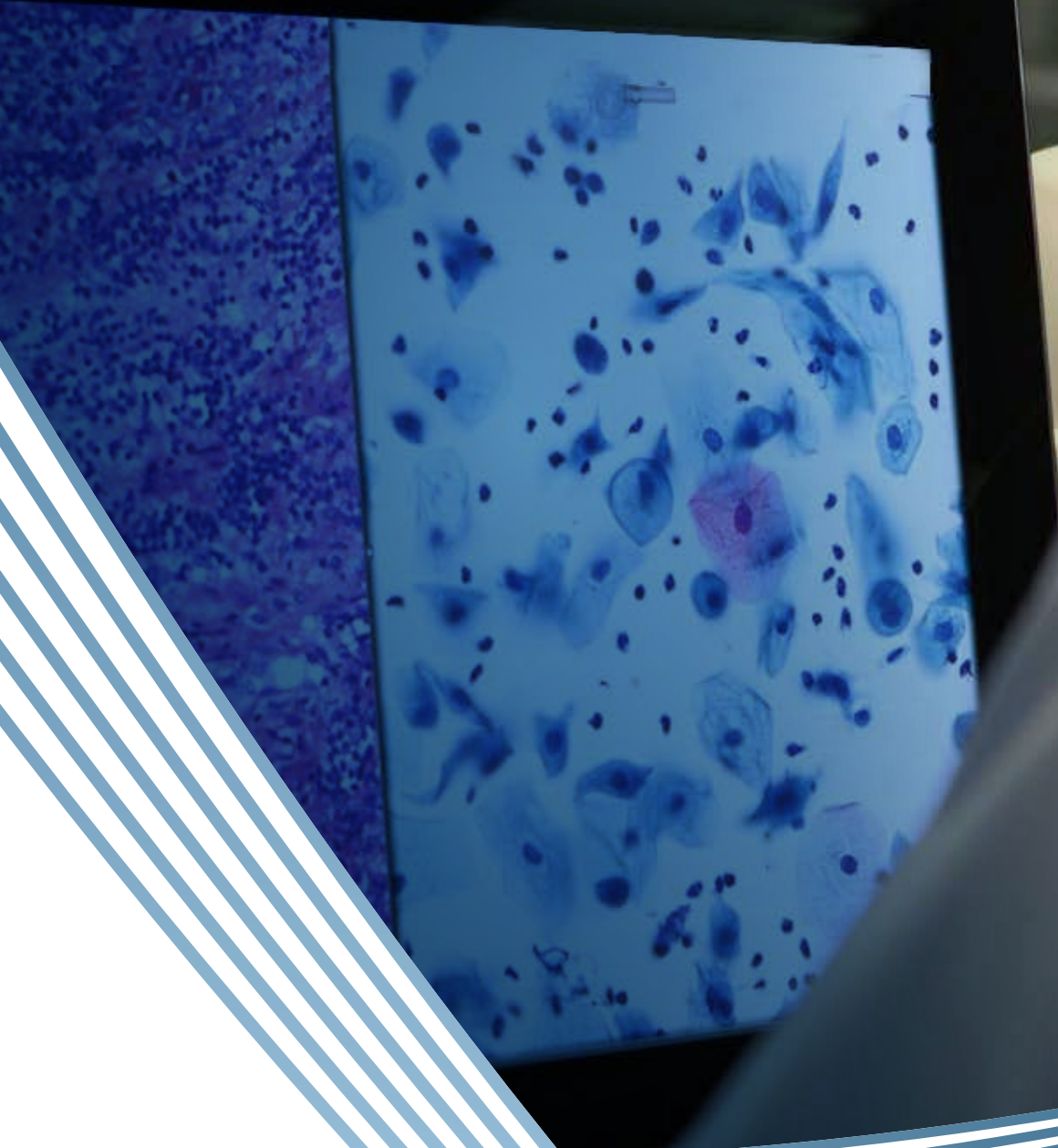


Boost your pathology workflow  
with

# DaVinci

User-friendly, comprehensive solution  
designed by and for pathologists for  
increased productivity in your department.



# Maximum functionality for maximum service

Accurate, rapid diagnoses are vitally important for patients. Pathology departments play a crucial role in these diagnoses. With DaVinci, you can optimise your pathology processes, and your employees can **work more efficiently and more collaboratively**. Results are available quicker and, of course, this benefits the patients.



For **digital pathology**, desktop integration ensures synchronous access to the digital pathology images and to the data in DaVinci. You work with one, single system, so to speak. A case is only added to your worklist after all the sections have been scanned and the case has been completely digitised.

## Comprehensive solution for all workflows

Pathologists, laboratory technicians and IT professionals have worked together intensively for many years on the development of DaVinci. The result is a user-friendly, comprehensive solution that not only increases the efficiency of routine tasks but also that of the most complex workflows, notably **histology, cytology, tumour banks, molecular pathology and digital pathology**. To achieve this, DaVinci seamlessly exchanges data with laboratory instruments and with the various software packages used in your department and your institution and by your clients.

## Advanced track & trace

By way of a bar code system (1D and 2D) and scanners at all workstations, you can monitor in detail who performed which tasks on which sample or aliquot. You also know exactly where each sample is in the workflow – from sample collection until the results are delivered. DaVinci helps you to safeguard the pre-analytical phase, ensuring that you comply with the requirements of ISO 15189.

## Tailored to any environment

DaVinci is an extremely flexible system. It can be configured to meet the precise needs of your department – a small or large pathology lab in a hospital or in a private environment. Even if you work with a central, multi-source architecture (one central laboratory for several client hospitals) or a multi-location architecture (several physical laboratories with one central database), DaVinci can streamline all your processes.

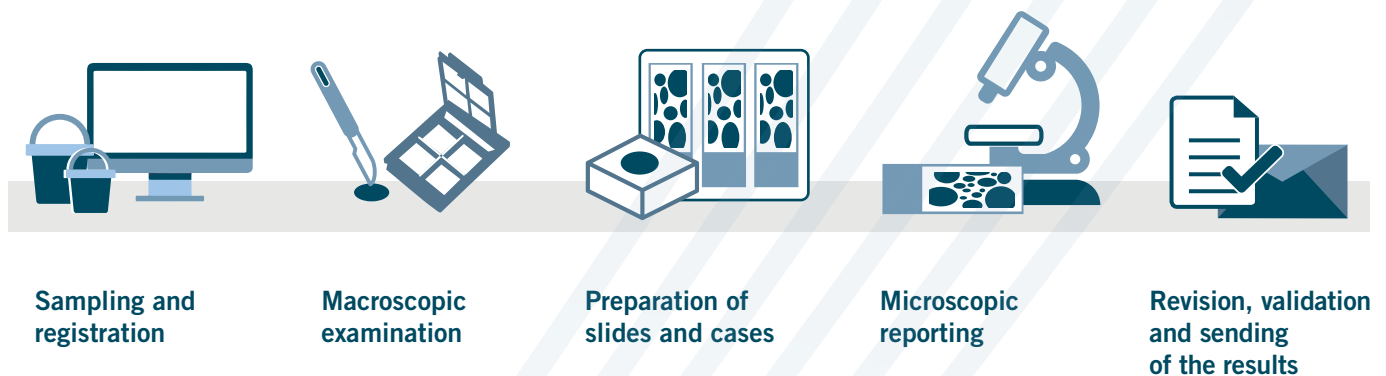


Thanks to digital pathology, we can work at any location by way of a virtual desktop integration. We can view images, dictate our findings and validate a report, just like in the hospital – we can be consulted from anywhere in the world.

*Ivo Van den Berghe*

*Director of Pathological Anatomy at AZ Sint-Jan AV Brugge-Oostende in Belgium*

DaVinci is fully equipped to support all pathology workflows from A to Z:



We have centralised the pathological examinations for four different sites in our laboratory in Roeselare. When the material arrives, it is linked to the exact source using the DaVinci patient registration function. After that, all samples follow the same flow.

For the pathologists, working with one central software package and one central database is very handy and saves significant time. We do not have to log on to various systems each time, and we can always use the same working method.

When the results are ready, they are automatically fed to the EPR of the correct hospital, along with the billing data. DaVinci is a fantastic, well thought-out system that is based on the concrete needs of pathologists.

*Dr. Francesca Dedeurwaerdere*  
Pathology Laboratory, AZ Delta in Roeselare, Belgium

## Digitise all workflows and keep your manual tasks and paper-consumption to a minimum:



- DaVinci supports **all traditional pathology processes**, with user-friendly and **task-oriented workflows** – starting from order communication and registration all the way to the delivery of the results.
- DaVinci features the functionality you need to set up **complex workflows**, such as **digital pathology, telepathology, second opinions and supervised validation**.
- Pathologists have access to **handy tools for standardised reporting**, including well-organised templates and wizards and the possibility to insert images. You waste no time starting up an external word processing system.
- **Interactive speech recognition**, Bluetooth headsets and foot pedals make it possible to **compile reports completely hands-free** for both macroscopic and microscopic examinations.
- What's more, DaVinci provides all the functionality required to support **multidisciplinary consultations**. You prepare the meetings and provide the participants access via the patient record to the pathology information: history, reports and digital images. You register which doctors are in attendance and which patients have been discussed, and you record the findings of the consultation. If required, you can also request extra exams.
- **Pathologists, assistants, laboratory technicians and administrative staff** all have access to personalised tasks and shared worklists. That way your team can work together more efficiently, increasing the productivity of your laboratory.



## Exchange data securely and efficiently:

- DaVinci is an **open system that exchanges data transparently with other software:** laboratory information systems, electronic patient files (communication of orders, including the printing of labels by the requester, and results), hospital information systems, billing systems, image archives, national databases for cancer registration etc.
- The interfaces between these systems are established on the basis of **international standards**, such as the IHE and HL7 standards.
- Of course, you can also quickly and easily **connect all the instruments and automatic equipment in your department to DaVinci:** cassette and slide printers, stainers etc.



## Quality and privacy ensured:

- **A complete bar code-based track & trace** of all objects and samples **and detailed logging** of all activities, including the management of non-conformities and incidents etc., support your **quality control system and your compliance with ISO 15189.**
- With just one push of the button, your department can implement the right to inspect, the right “to be forgotten” and the right to the transferability of data. That way you are in full compliance with the applicable **privacy guidelines and the GDPR.**
- MIPS is also the proud recipient of an **ISO 27001 certificate.** You can rest assured that with DaVinci your information is in safe hands and that we do everything necessary to keep it that way.

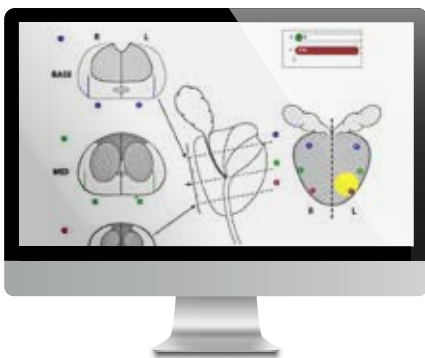


# Powerful tools:

Samples can be automatically assigned to worklists where pre-configured stains are automatically sent to linked staining instruments based on the type of sample and including a visual indication of their urgency.



► Detailed logging, powerful search engines and statistical analyses provide insight into laboratory activities and turnaround times, helping you to increase efficiency



► With the **drawing module**, you can load sketches of histological preparations and indicate which tasks have been completed during the preparation phase. You have easy access to all information about the preparations.

Using a dashboard that you can organise according to your specific needs, you receive **information about bottlenecks** in the process or peaks in the workload so you can take the appropriate actions.



EVERY DAY  
MORE THAN

**50**

pathology laboratories in various European countries use our solution, and their numbers continue to grow.



# Why MIPS?

At MIPS, we have worked for more than 35 years on the development of high-quality information systems and workflow solutions. Today, these solutions make the difference in 2500 medical laboratories in 35 countries. In the Benelux, MIPS is the undisputed market leader.

## **Integrated diagnostics: From order input and sample collection to the delivery of the results**

Our solutions can be tailored to meet the needs of all disciplines in hospital and private laboratories. They support all workflows, from the simplest to the most complex, in clinical chemistry, microbiology, pathology, molecular diagnostics, genetics and blood transfusion management.



With our Integrated Diagnostics portfolio, laboratories can cut costs, save time and deliver better care.

## **New perspectives on the future of the laboratory**

The MIPS portfolio is future-proof and continuously evolves alongside the ever-growing needs of even the most advanced laboratories. This is possible thanks to our intensive focus on innovation and modern technology, thanks to the efforts, lab experience and expertise of our 260 employees<sup>1</sup> and thanks to the feedback from our users throughout Europe.

<sup>1</sup> More than 80% of our Customer Service team and our Support team have a scientific background.

## **MIPS – Part of the CliniSys Group**

### **MIPS Headquarters**

Sluisweg 2, bus 5

9000 Gent

Belgium

Tel. +32 9 220 23 21

Fax: +32 9 220 48 10

[info@mips.be](mailto:info@mips.be)

[www.mips.be](http://www.mips.be)